

IDEAL 0135

High-quality, manual rotary trimmer
for office and graphic applications.
Precise cuts up to 135 cm cutting length.

Safety cutting head

Self sharpening rotary blade

Automatic clamping system

High quality, anodised aluminium cutting table

max.

0.8

mm

←135 cm→



Technical specifications

Cutting length 1350 mm

Cutting height max 0.8 mm

Table depth 280 mm

Dimensions 965 x 1600 x 380 mm (H x W x D)

Weight 21.5 kg

Product characteristics

Suitable for cutting and trimming of blueprints, paper and foils, drawings, plans, photos, posters or similar digital printouts. Slotted side brackets for cutting oversized formats. Smooth running safety cutting head with self sharpening rotary blade made from special hardened steel. Counter blade made of stainless knife steel. Automatic clamping system with transparent clamp bar. High quality, anodised aluminium cutting table. Two measuring scales (cm). Robust side brackets made of impact-resistant ABS plastic material. Precise cross bar for easy sliding of the safety cutting head. Four non-slip rubber feet. Colour: aluminium grey/white. With sturdy metal stand and practical collection tray for trimmings.

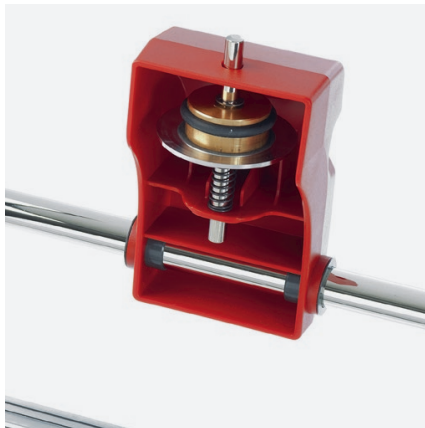
IDEAL 0135

Features



SAFETY CUTTING HEAD

Safety cutting head with self sharpening rotary blade for efficient, precise and safe cutting.



ROTARY BLADE

The self-sharpening rotary blade is made of special hardened high-quality steel.



MEASURING SCALES

Two measuring scales (cm) are placed on the cutting table to enable precise cuts.



PAPER COLLECTION TRAY

The paper waste is collected conveniently underneath the working table of this rotary trimmer.



IDEAL